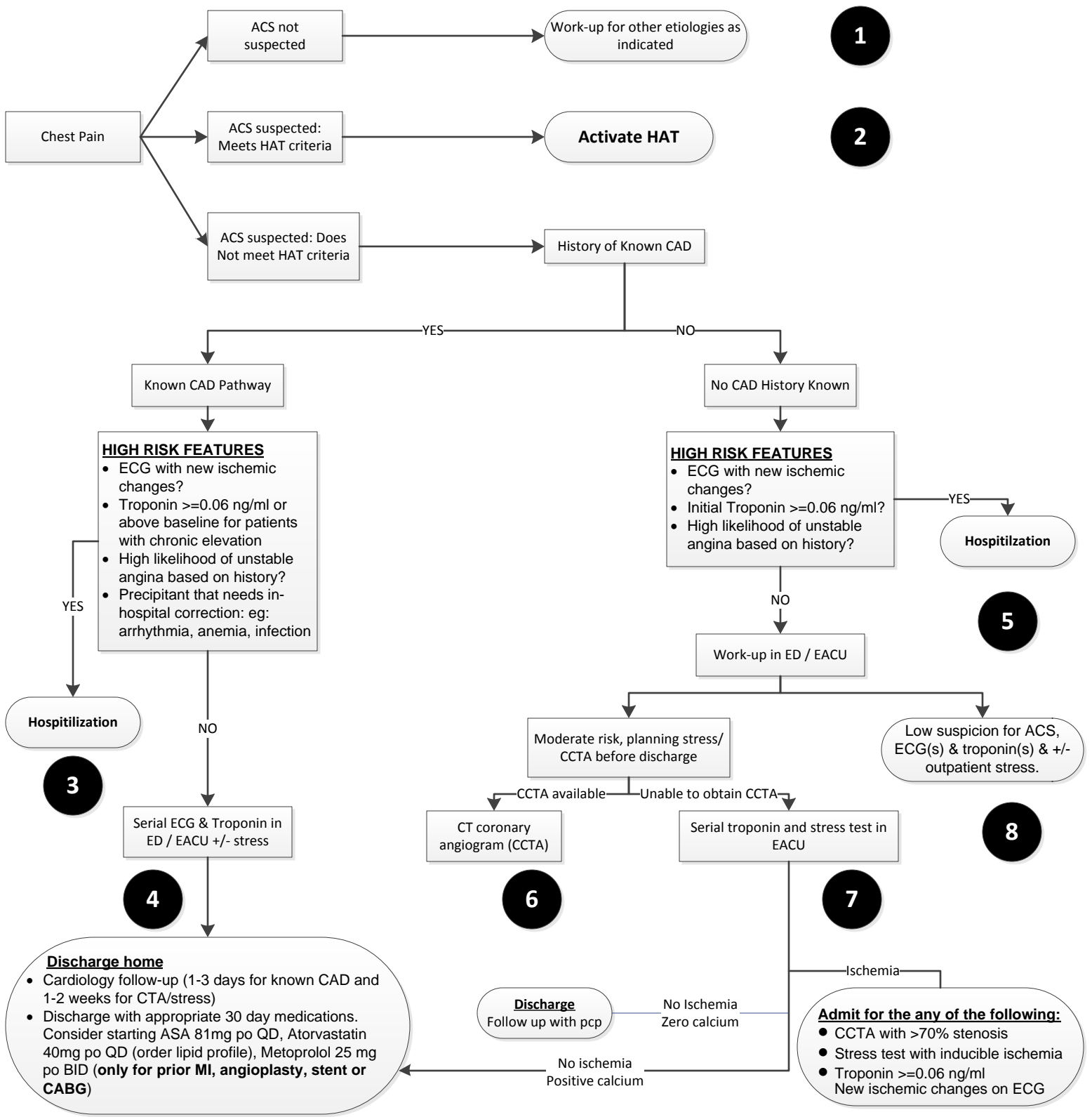


Diagnostic Algorithm for the Evaluation of Chest Pain in the Emergency Department



Notes

- ACS = STEMI or NSTEMI or Unstable Angina
- Cardiology follow-up: Patient's own cardiologist (preferred) or JHH cardiology clinic follow-up
- Consider consulting case management for repeat visit patients who did not follow-up with PMD/ Cardiology.

CCTA inclusion criteria

- Available 7a-7p M-F, and 8a-4p Sat-Sun; for EACU 8a-5p M-F in cardiology
- Age 18-80, non-diagnostic EKG changes, normal initial troponin, Normal sinus rhythm, able to perform breath-hold of 10-15 sec, able to tolerate beta-blockers to reduce HR < 60 bpm, 18 or 20g IV in AC

What to do with CCTA results

- No stenosis, zero calcium – discharge
- Stenosis present but less than 50% OR positive calcium - serial troponin
- Stenosis 50 – 70%: Stress test
- Stenosis >70% - Ad