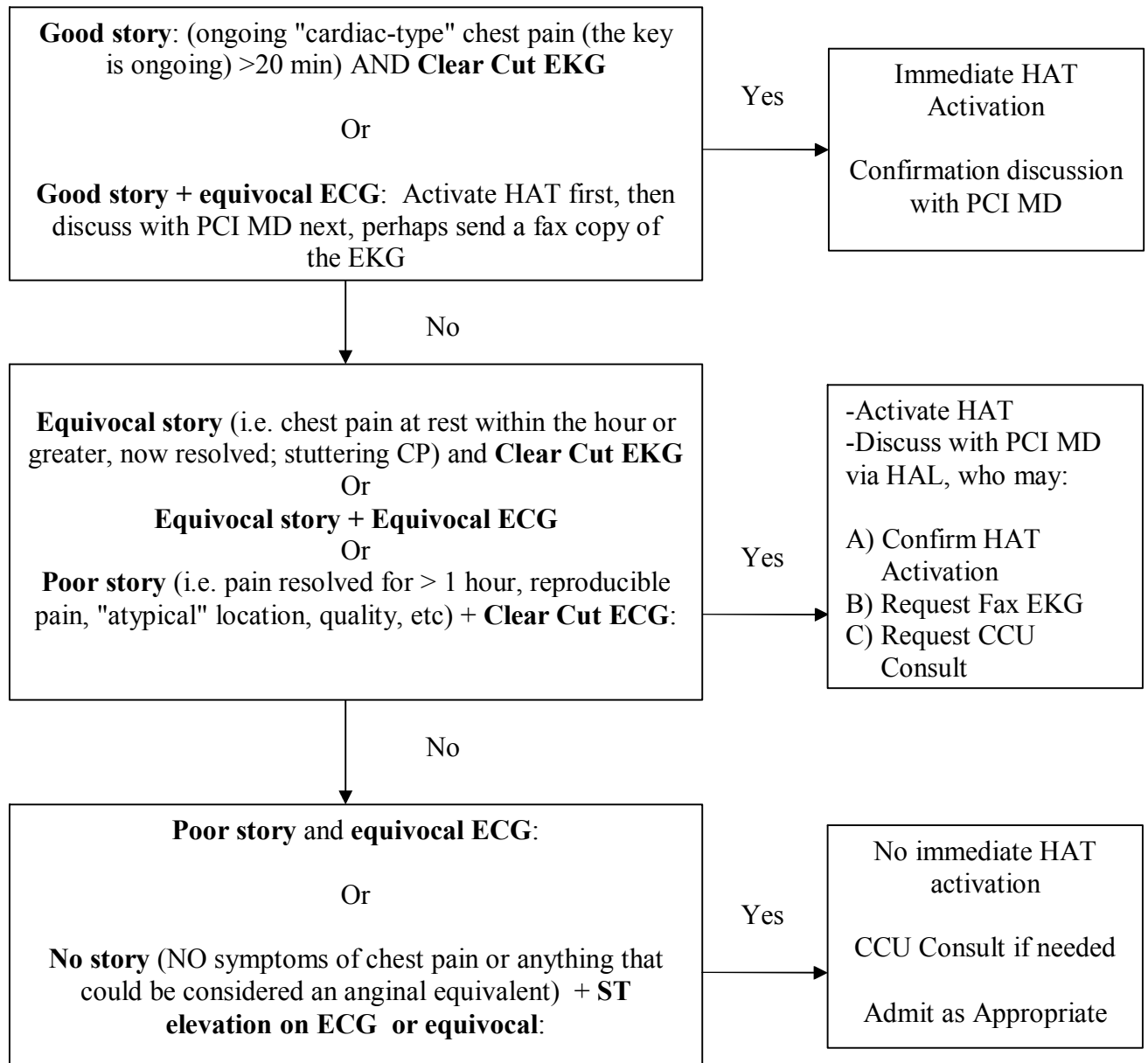


# JHH HAT Activation Algorithm

Patient has chest discomfort, or other symptoms suggestive of MI  
 AND  
 Does EKG show  $\geq 1$ mm, ST Segment elevation in 2 or more leads? OR  
 Does EKG show  $\geq 1$ mm ST segment depression in V1 and V2 compatible with true posterior infarction? OR  
 Does EKG show new or presumed new LBBB

**If yes, call HAL (5-9444) to activate the Hopkins Heart Attack Team. (JHH HAT)**



## EKG Transitions Options to PCI Attending

### Muse Reads

The EKG's can be uploaded to the Muse system in real time (generally). They must have at least a name and prior to transmission. They can then be read by the PCI attending over the Internet.

### Groupwise Fax

You may fax the EKG to 1-877-884-8839. The fax may then be read in Groupwise (the username is JHHCardiologyFax and the password is heart). The EKG shows up in Groupwise in about 3 min. from hitting Send.