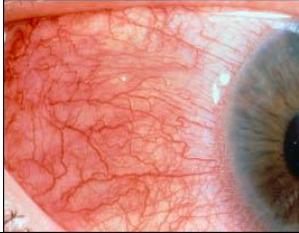





Guide to using the RESCUE (Rome Eye Scoring System for Urgency and Emergency) Triage System for Ocular Emergencies

	None	Moderate	Severe
Redness	0	1	2
Pain	0	1	2
Acute Vision loss	0	2	4
Open Eye Risk	0	2	4

****Note:** The below constitute informal guidelines only; when in doubt rely on your judgment.

REDNESS		
Moderate:	moderate injection	OR partial conjunctival hemorrhage
		
Severe:	severe injection	OR complete conjunctival hemorrhage <i>*make sure to ask patient to look in all directions to evaluate degree of conjunctival involvement</i>
		

PAIN		
Moderate:	5-7	/10
Severe:	8-10	/10

ACUTE VISION LOSS (< 72 hrs)	
Moderate:	Acute "Blurriness" of vision OR New "spots" or "floaters" (with or without flashes of light)
Severe:	Complete loss of vision (unable to count fingers) OR Curtain (e.g. black/gray) across field of vision

OPEN EYE RISK:

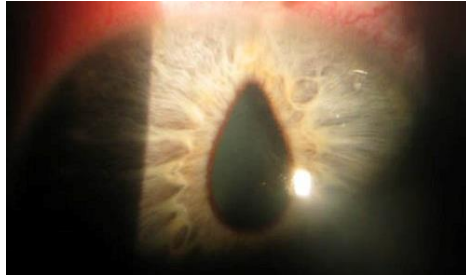
History of high impact TRAUMA with blunt *or* sharp object

and

1. Sustained loss of vision
2. Foreign body protruding from globe, *or* patient states foreign body removed from globe (e.g. dart, knife, nail, wood, branch, etc)
3. Imaging (from JHH or referring provider) that shows open or collapsed globe
4. 360 degree bullous subconjunctival hemorrhage (below)



5. Eye appears collapsed or deformed (above)
6. Peaked pupil (below)



Moderate: Moderate level of concern for open globe

Severe: High level of concern for open globe