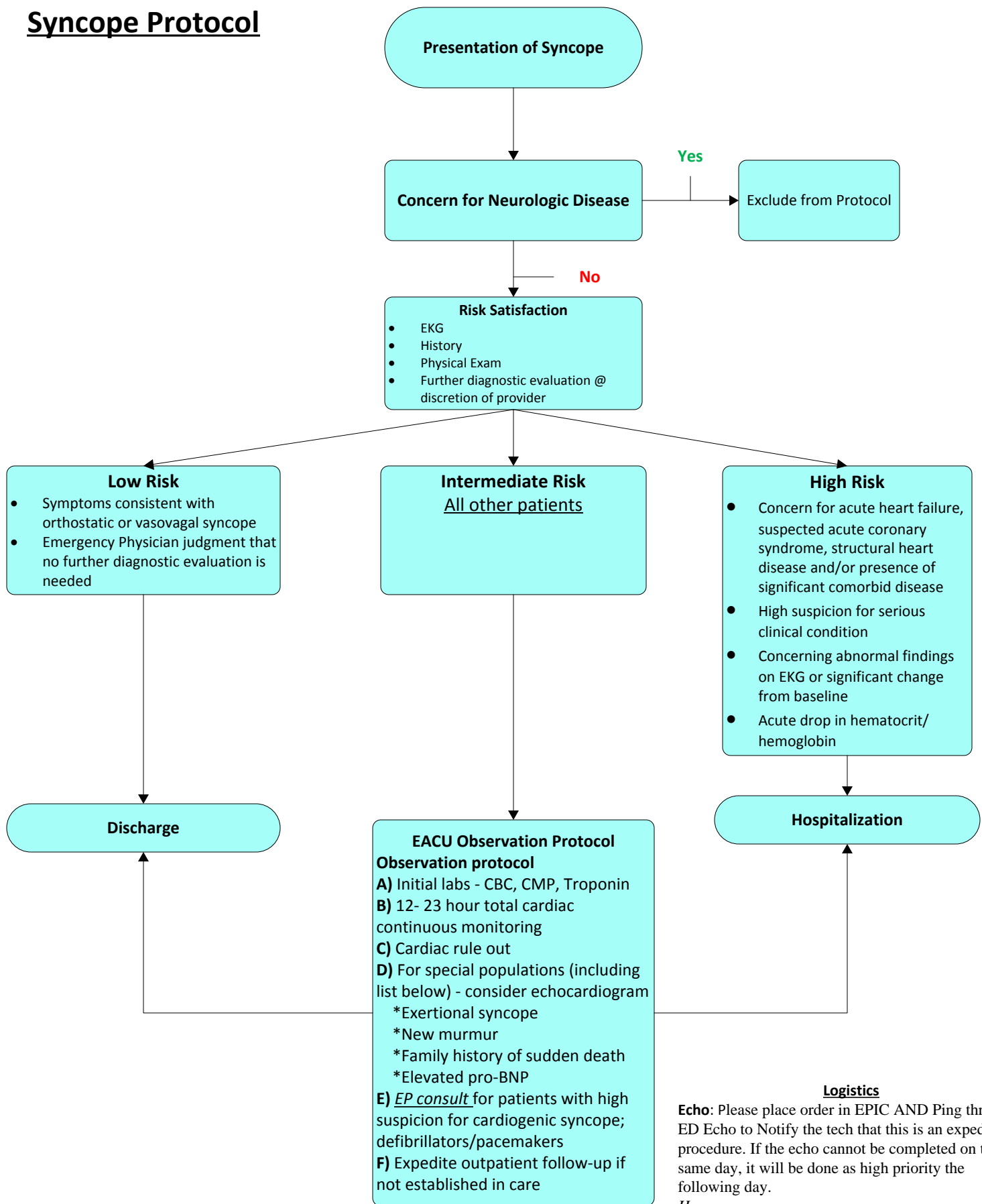


Syncope Protocol



Logistics

Echo: Please place order in EPIC AND Ping through ED Echo to Notify the tech that this is an expedited procedure. If the echo cannot be completed on the same day, it will be done as high priority the following day.

Hours

Monday - Thursday 730 am to 7pm

Friday 730am - 5pm; Sat/Sun 730am - 4pm

EP: Use the PING EP consult page. Include in your page – ED Syncope Protocol. If any issues/concerns, please contact Dr. Saheed 25142 or email msaheed1@jhmi.edu